

FAO

STEVEN LIU

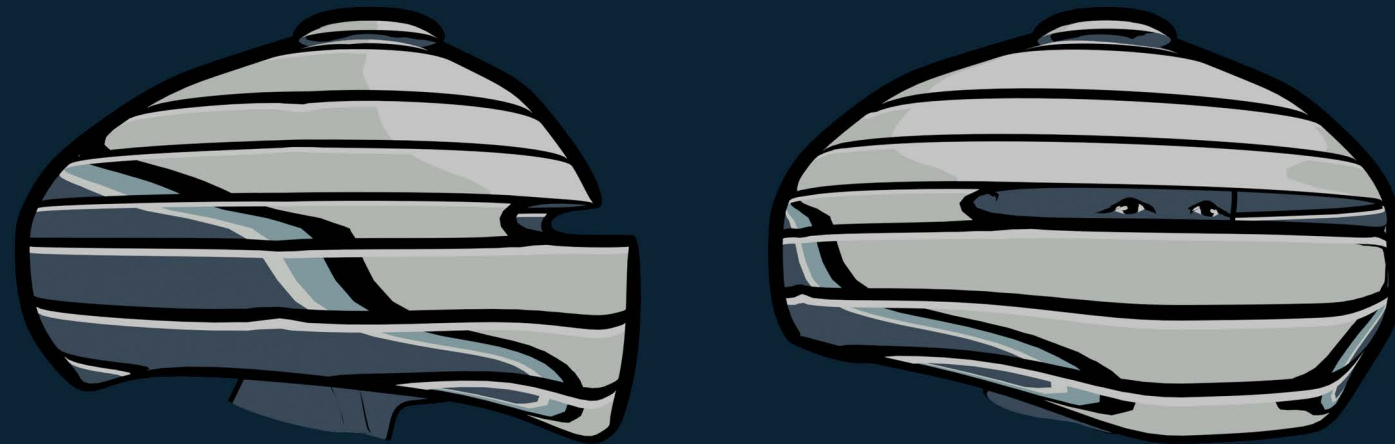


# The Riders



The creation of the island is believed to have come from a large, continental egg exploding, leaving the pieces of the egg to sink into the ocean, creating the numerous islands. This egg came from the Pheasant God, the God of life, and rebirth

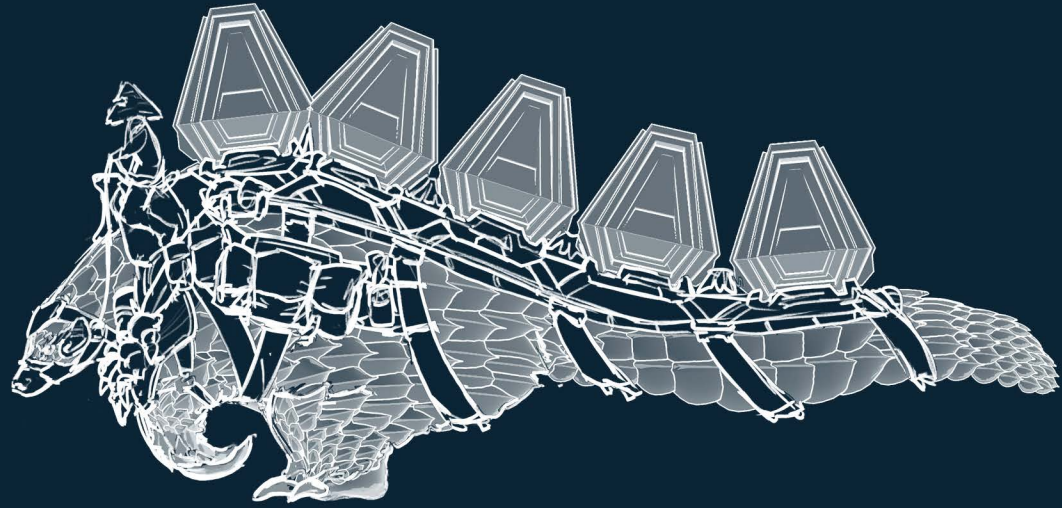
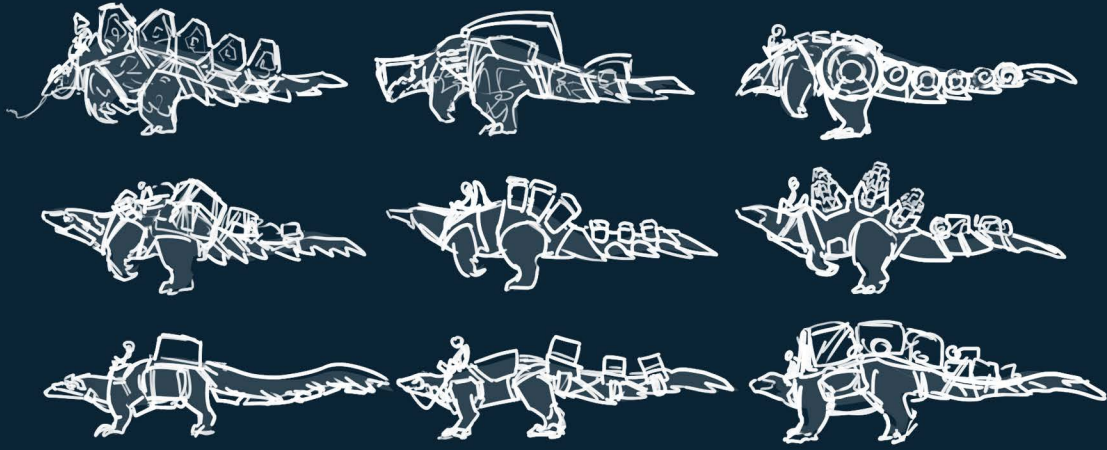
The helmets of the rider are more ceremonial than practical. These thin, egg-like helms show that the transported goods are under protection and the riders are spiritually safe.



The dress of the riders is very simple. Striped shoulder coverings protect the riders from the harsh sun and serves as a status symbol. A loose cord wraps around the torso and offers connection points for anything the rider needs to carry. The legs remained uncovered as to make swimming, running, and general mobility easier..



# The Pangolin



The pangolin is a docile creature that is the largest on the island. It feeds on the large number of insect species found across the islands. Its powerful claws can crush the slate mountains and the hard ground to gain access to prey. It is also surprisingly mobile in the water as well, using its tail as a large paddle.

The rides have tamed a few of the pangolin found across the islands. Their relationship is a symbiotic one. The pangolin helps transport goods to the multitudes of people, and the village takes care of the pangolin. Tamed pangolin are young adults, fully matured adults are released back into the wild to find a mate.

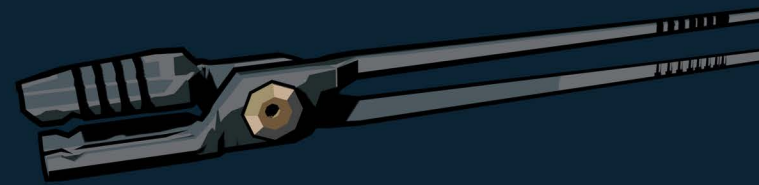
# The Blacksmith



The dress of the blacksmith is similar to other men in the village although with more fireproof materials. Fish scale armor adorn the shoulder coverings and a thin metal guard is around the waist.



The tongs of the blacksmith are forged after the likeness of the Quicksand Snake, symbolizing the solid hold upon the working metal.



The Araw Bear is the biggest hammer, used to refine and align large steel pieces

The Sea King has been immortalized into the most used hammer

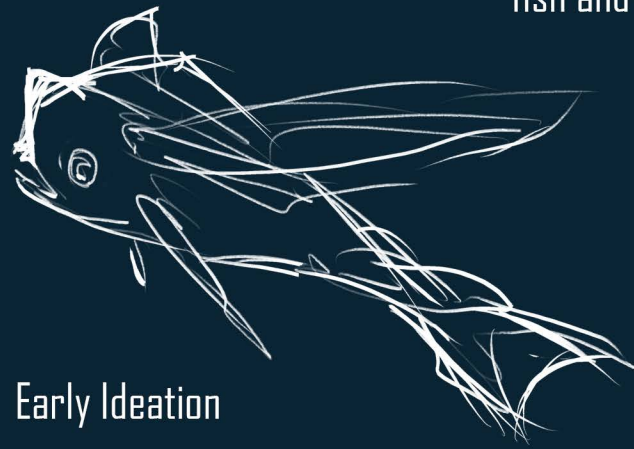


The ball hammer is forged after the likeness of the Tree Lizard, molding the prehensile tail to be the striking face.

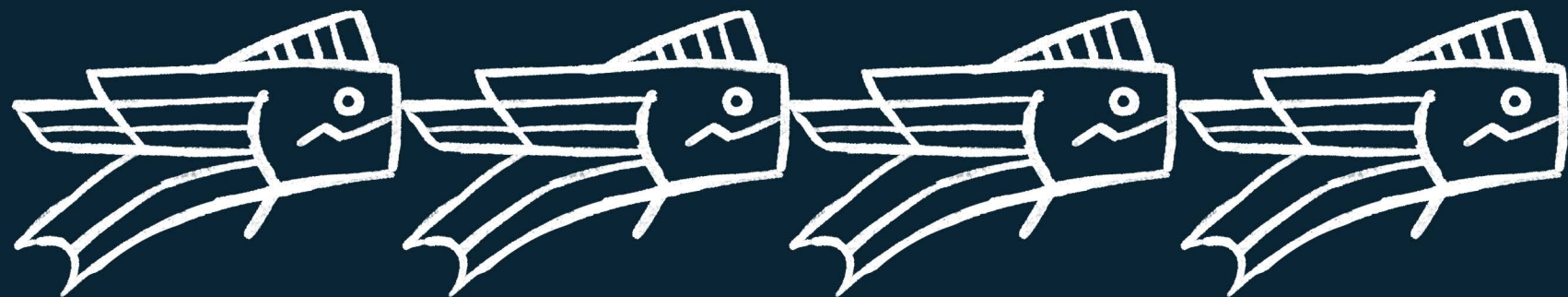
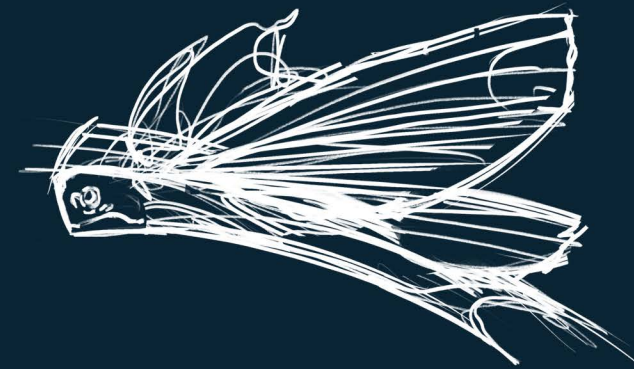


# The Sea King

This flying fish has cranial bones that form a square head. This fish can use its flat tail and body to propel itself out of the water and glide for tens of meters. This predator consumes both fish and sea birds.



Early Ideation



The Tao people see this animal as the king of the sea. It is one of the most important symbols in their culture. The Sea King offers protection and power. The use of this symbol in tools, housing, and equipment provide strength and preservation. The consumption of these fish is only allowed during a yearly festival, when the migratory pattern of the fish push the fish to the arc of the island.

# The Pheasant



The female pheasant wanders the island in its bright plume. The males of this species are a bit duller in color and smaller in size. This animal represents life and fire. Its talons and beak comprise of iron and keratin. When the pheasant strikes the stones on the island, it is able to throw sparks as part of it's mating display.

Early members of the Tao people would use the talons and beaks of these birds to start fires. The fire that was created would then accelerate the development of the people.

Male



Female



# The Wild Kois

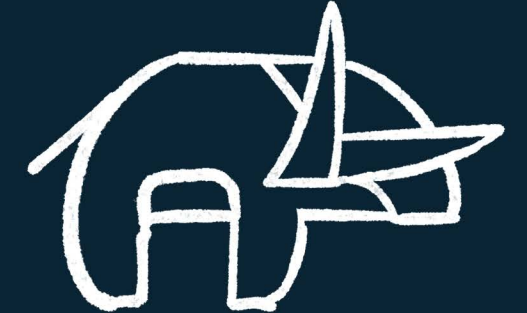


The Kois is a large boar that roams the mountainous regions of the island. They are aggressive and territorial but hardly venture down the mountain and pose a threat to the people. Even so, people will often hold ceremonial hunts of this animal as they do yeild a lot of meat and resources.

Male



Female



Both males and females sport large, sharp tusks to uproot flora to eat the nutrient dense roots. Their large heads house muscles that can break down the toughest plant material. Males have a large mane running down the length of its back along with bluer skin. Females lack the mane and have a more neutral color to blend into the environment.



# Other Fauna

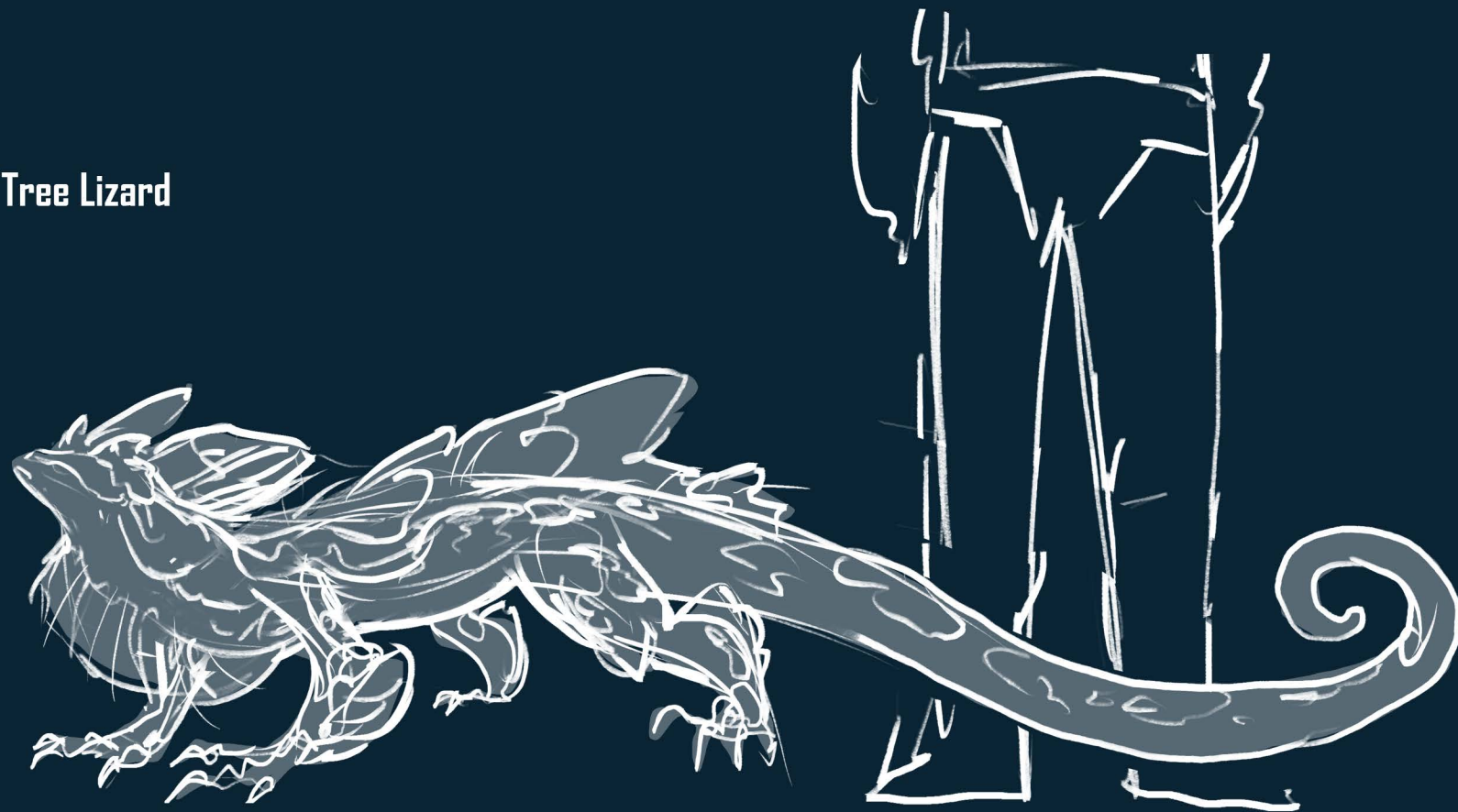
Heron



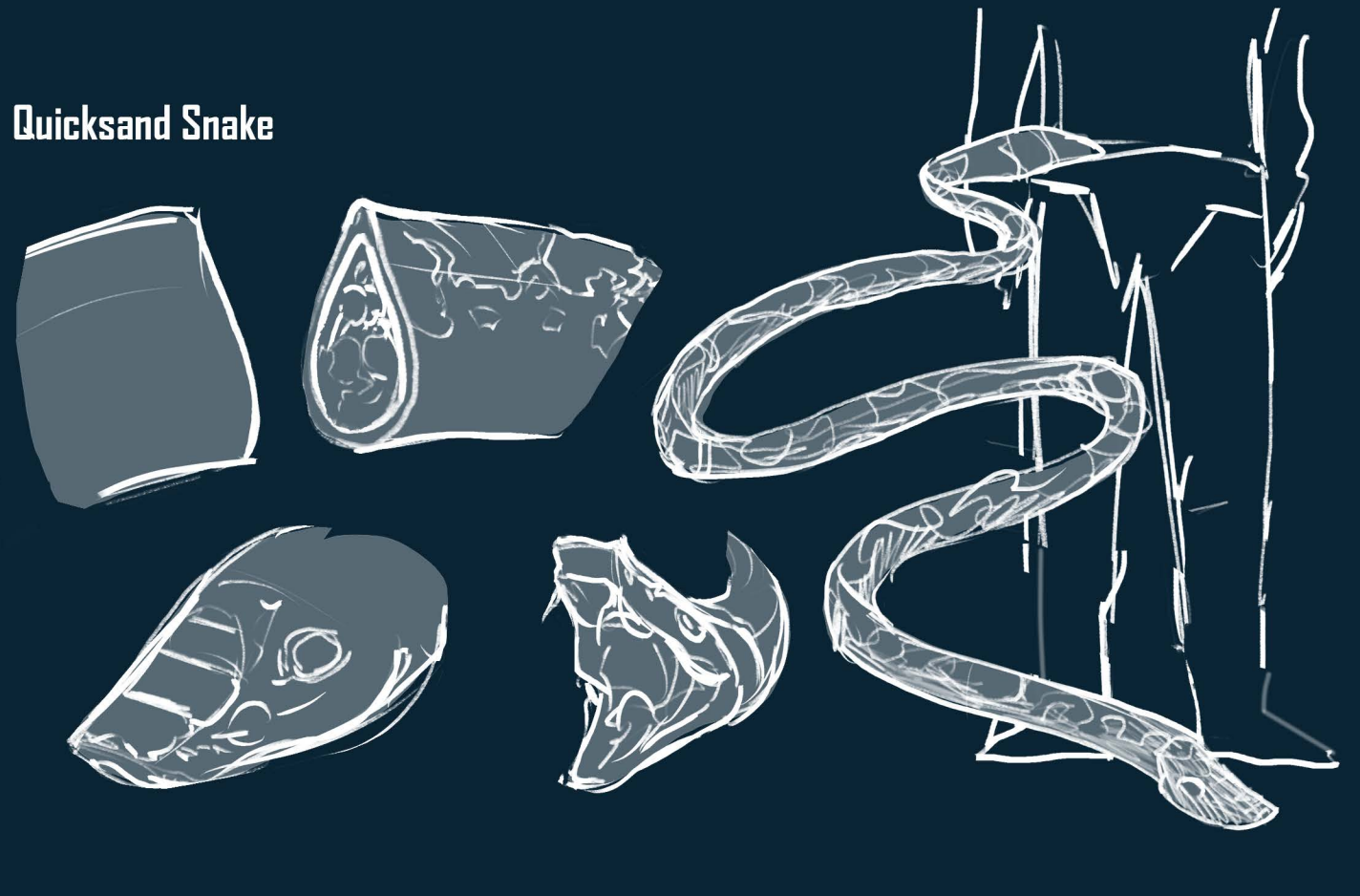
Araw Bear



Tree Lizard



Quicksand Snake



TAO  
STEVEN LIU

# The Village

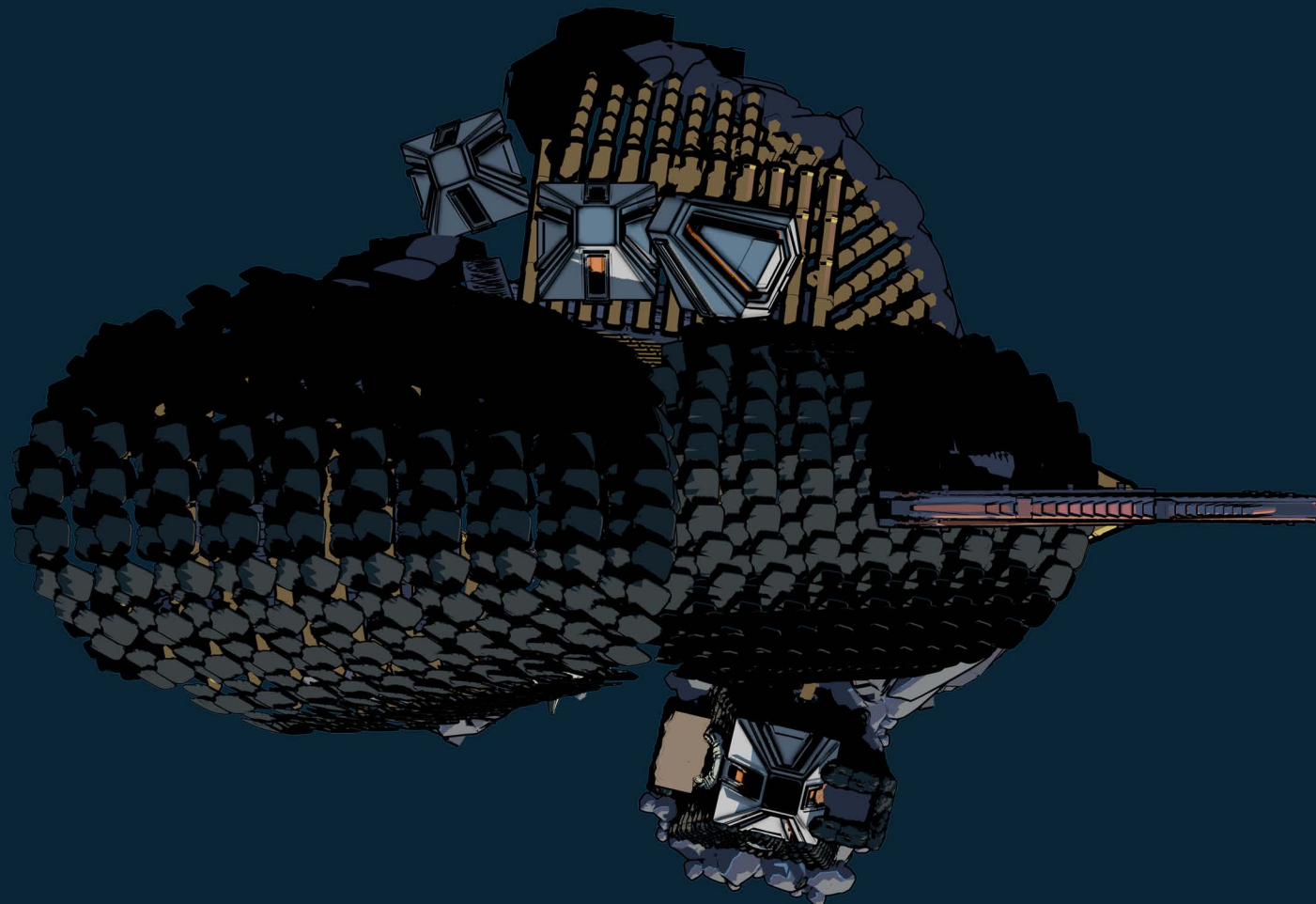
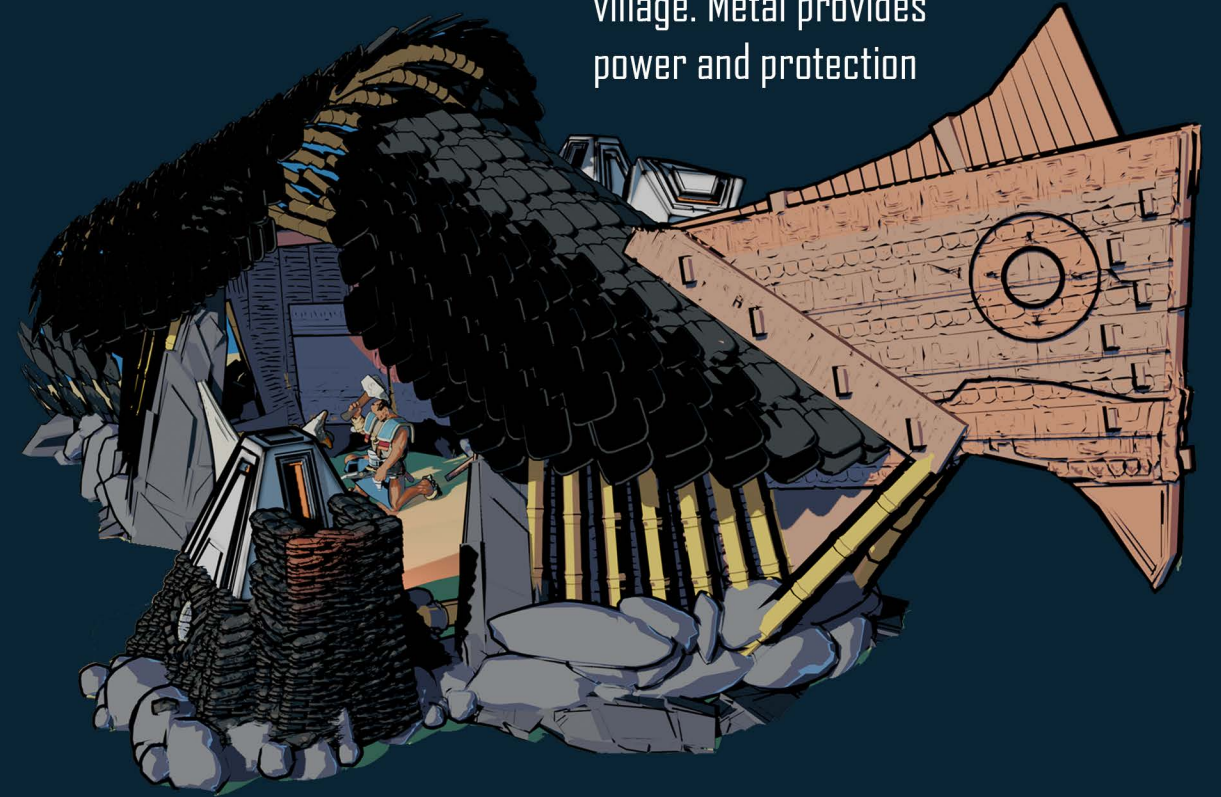


# The Blacksmith Hut

The open side and offset roof offer maximum airflow using the ocean breeze

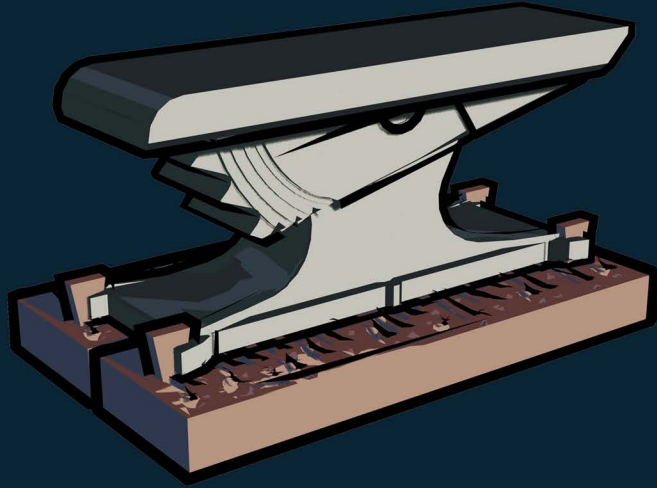


The head of the Sea King is a symbol of metallurgy in the village. Metal provides power and protection

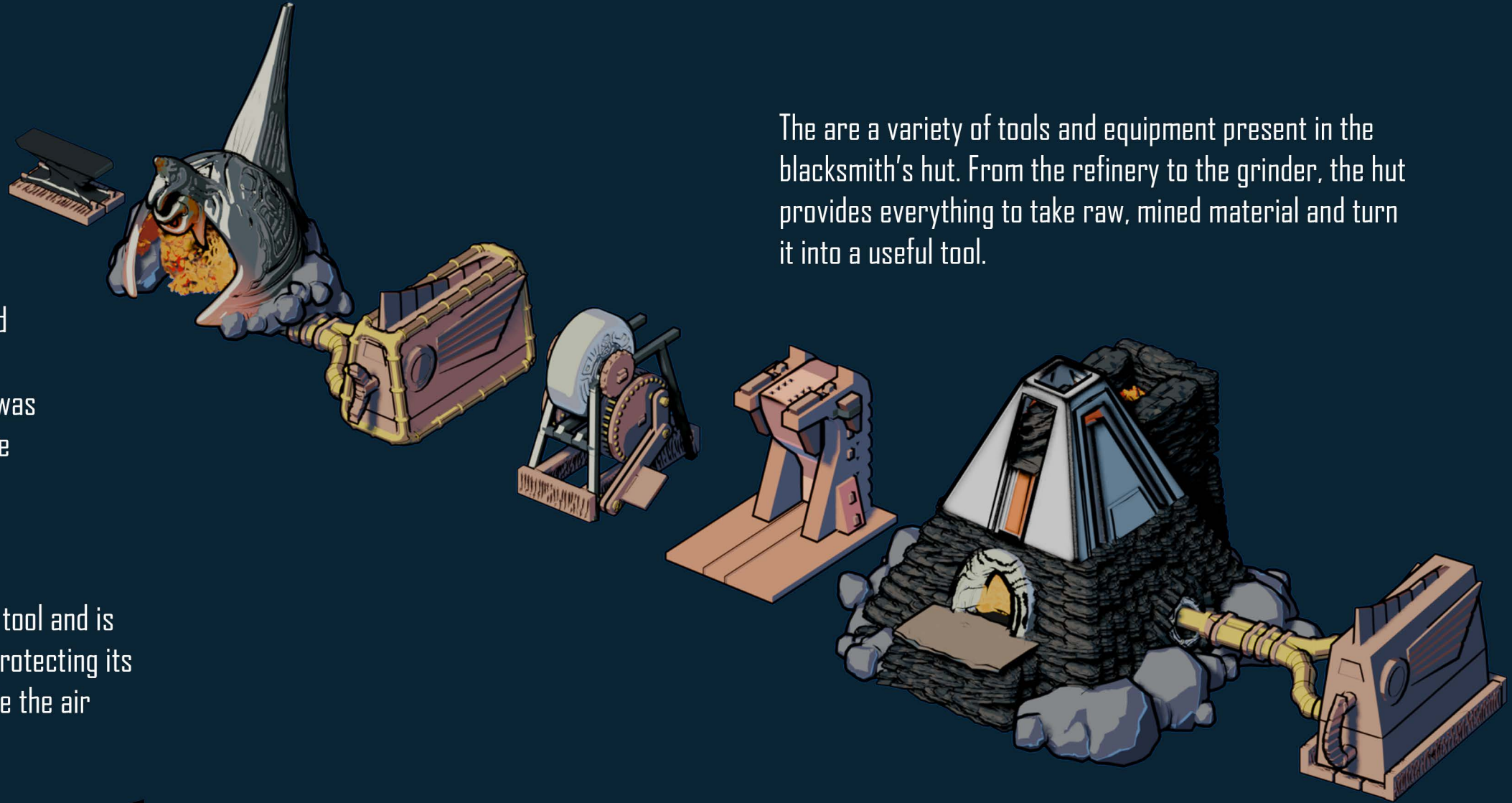


Blacksmiths will both forge and refine steel into the necessary tools

# Equipment



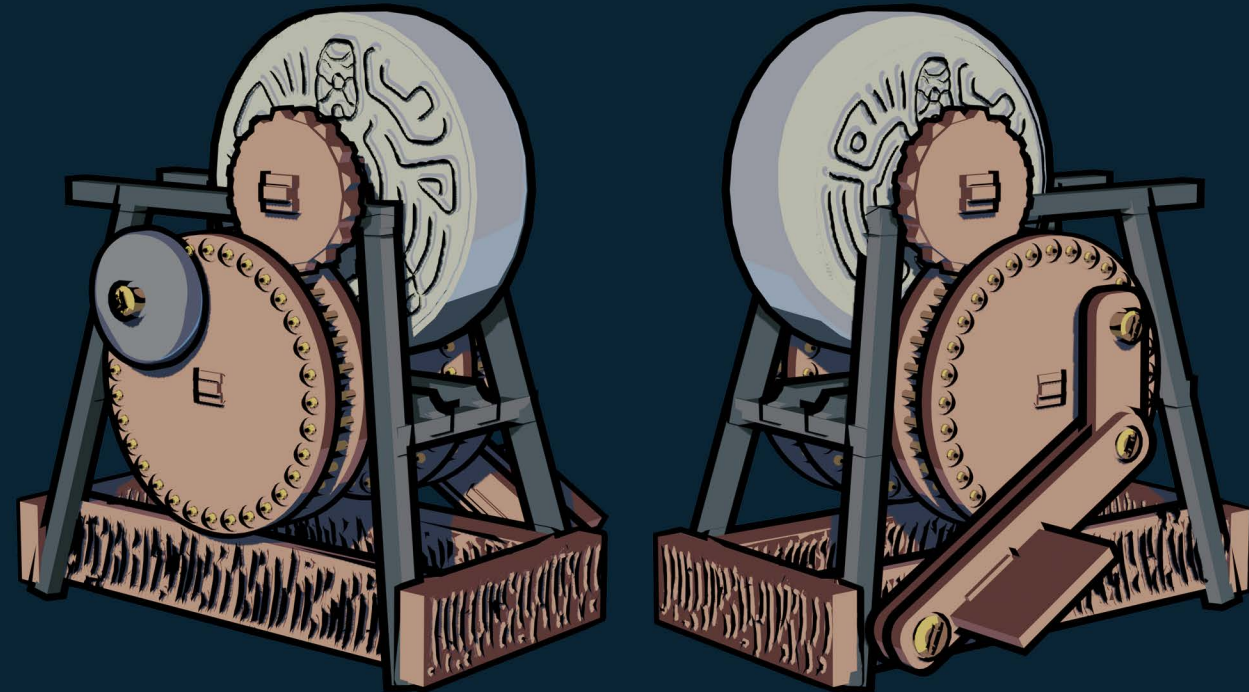
The anvil is shaped after the heron, whose hard beak was used as a primitive striking surface.



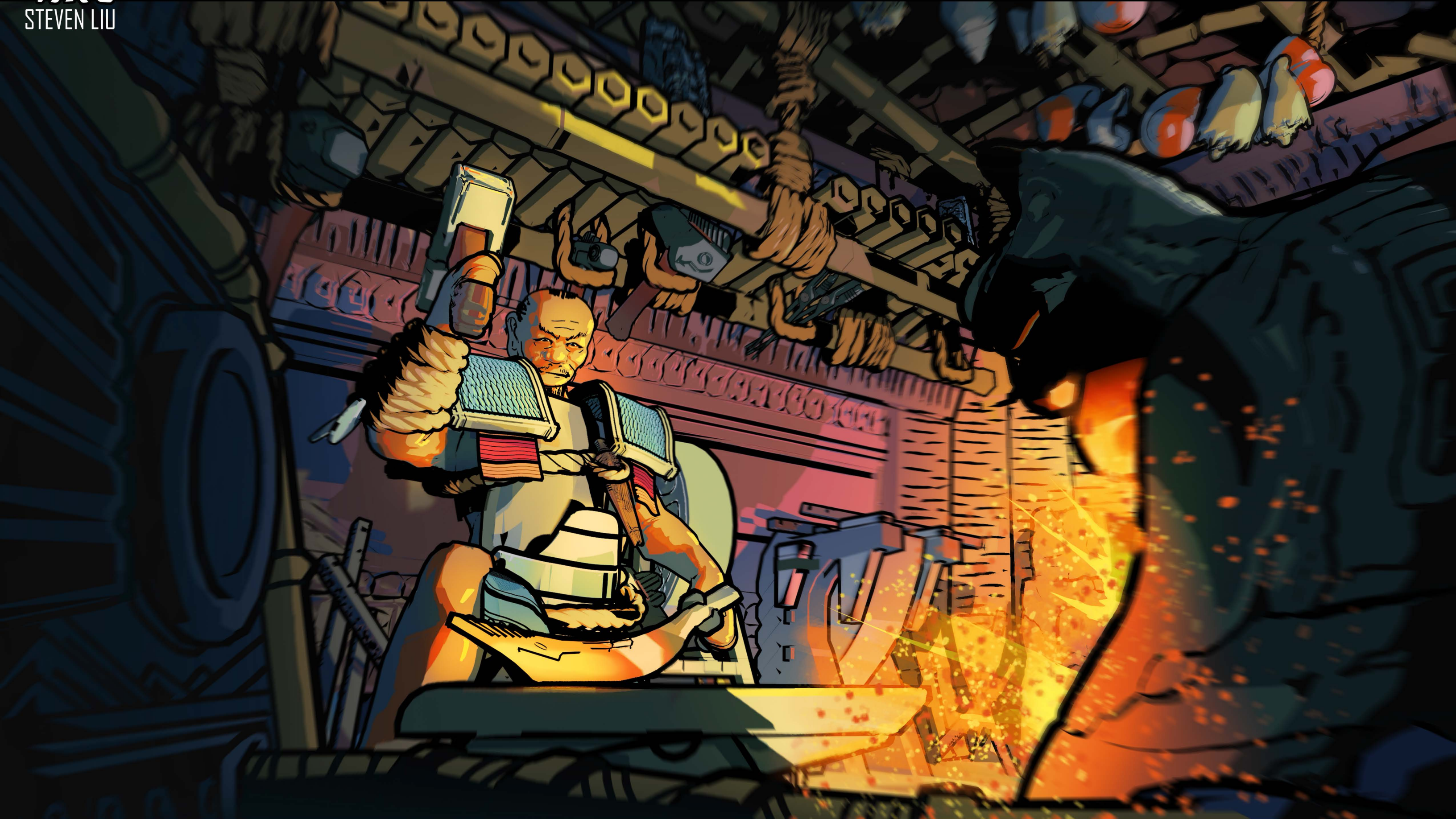
There are a variety of tools and equipment present in the blacksmith's hut. From the refinery to the grinder, the hut provides everything to take raw, mined material and turn it into a useful tool.



The forge is the birthplace of the tool and is shaped to resemble a pheasant protecting its nest. The Sea King bellows provide the air that super heats the coals.

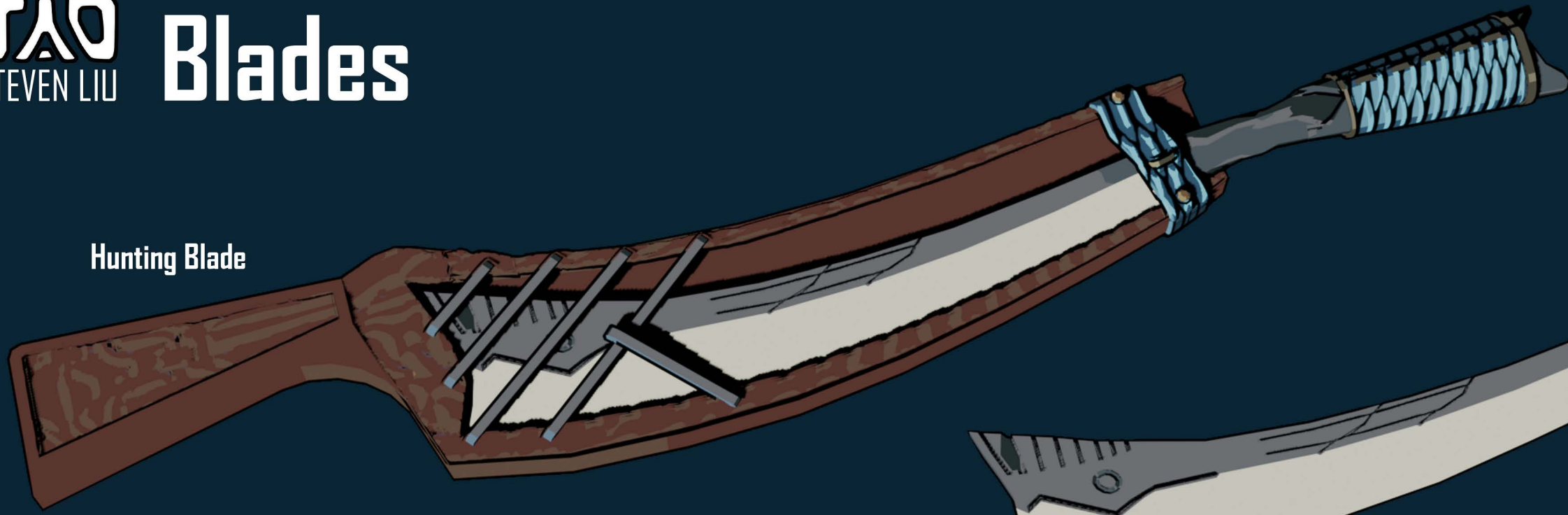


A sturdy grind stone is used to shape and sharpen tools to their desired looks. More intricate carvings are done in the forging process.

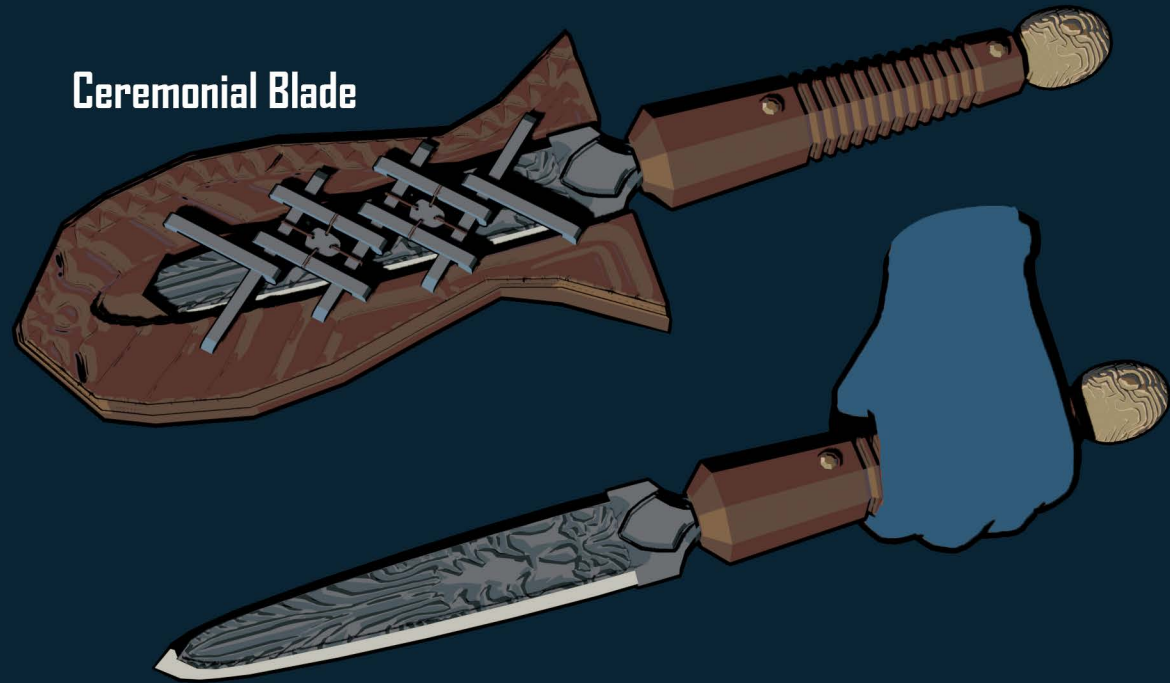


# TAO STEVEN LIU Blades

Hunting Blade



Ceremonial Blade



Utility Blade



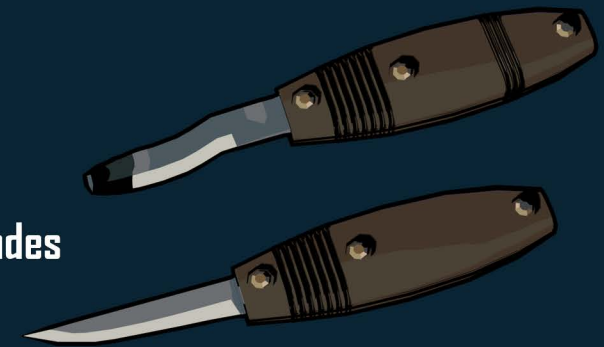
Agricultural Blade



Cooking Blade



Carving Blades



Handle materials are made out of the hardwoods found on the island, the bamboo, or even dried and tanned fish leather. Each handle holds a unique feature that is suited for its duty.

The iron is mixed with a variety of compounds to make a sharp yet durable steel. Blades are used in everyday life, from cooking to carving. Each blade holds a special purpose in the community.

TAO  
STEVEN LIU

# The Island



